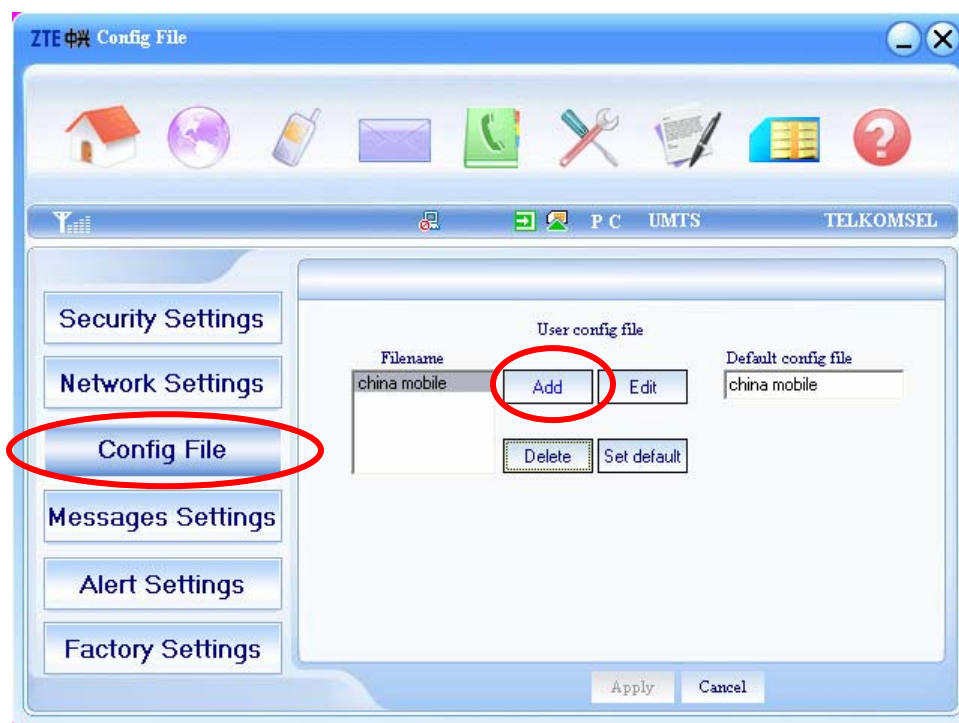


1. Please make sure you have registered your Telkomsel SIMCard by sending SMS with Keyword : Flash to 3636. If you haven't, please do so and wait until you receive reply SMS from 3636 as a sign that registration is successful.
2. Double click the UMTS GPRS Wireless Card icon on your desktop or Click Start > All Programs > UMTS GPRS Wireless Card > UMTS Wireless Card (this step can only be done after you have successfully installed the ZTE driver)
3. IF you are asked to enter your PIN, please enter you Telkomsel SIMCard PIN correctly (this is the same number that is asked whenever you turn on your handset)
4. Click Settings icon



5. Click Config File and Click Add



6. Please fill in the box according to the below picture and Click OK afterwards

The screenshot shows a 'Config File' dialog box with the following fields and options:

- Config filename:** Tsel Broadband (circled in red)
- Dial Number:** \*99# (circled in red)
- User Name:** (empty)
- Password:** (empty)
- Save Username and Password
- Ask for Username and Password
- Obtain APN address Automatically
- Use the following APN name (circled in red)
- APN:** flash (circled in red)
- PDP Type:** IP (selected), PPP
- Authentication Mode:** PAP, CHAP (selected) (circled in red)
- Obtain DNS server address Automatically
- Use the following DNS server address
- Preferred DNS:** (empty)
- Alternate DNS:** (empty)
- Obtain PDP address Automatically
- Use the following PDP address
- Address:** (empty)

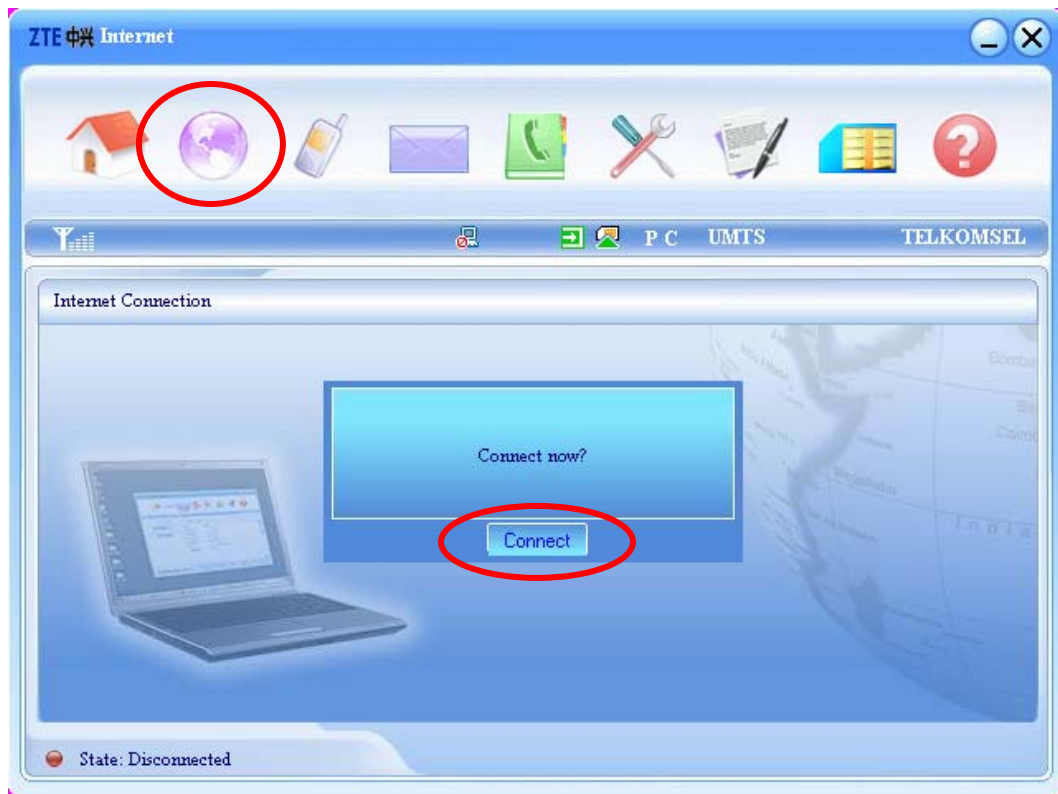
Buttons: OK, Cancel

7. Click on Set Default

The screenshot shows the 'ZTE Config File' window with the following elements:

- Navigation Panel:** Security Settings, Network Settings, Config File (selected), Messages Settings, Alert Settings, Factory Settings
- User config file section:**
  - Filename list:** china mobile, Tsel Broadband (selected)
  - Buttons:** Add, Edit, Delete, Set default (circled in red)
- Default config file:** Tsel Broadband
- Buttons:** Apply, Cancel

8. Click on Internet Icon and then Click Connect



9. If you follow the step 1 to 7 correctly, you will be able to successfully connect to Telkomsel network with TELKOMSELFlash settings. Successful connection will be marked with dialog box as shown below.

