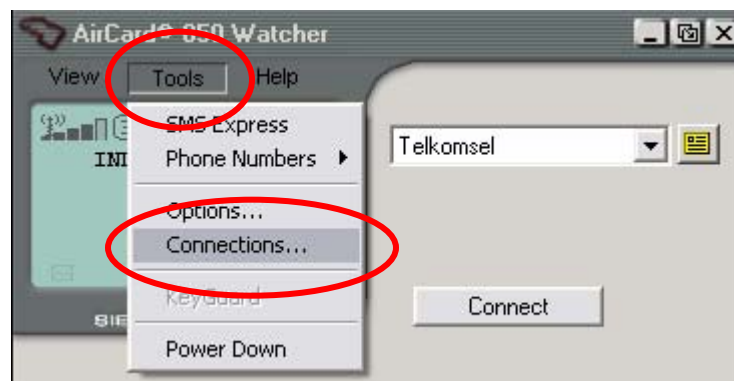


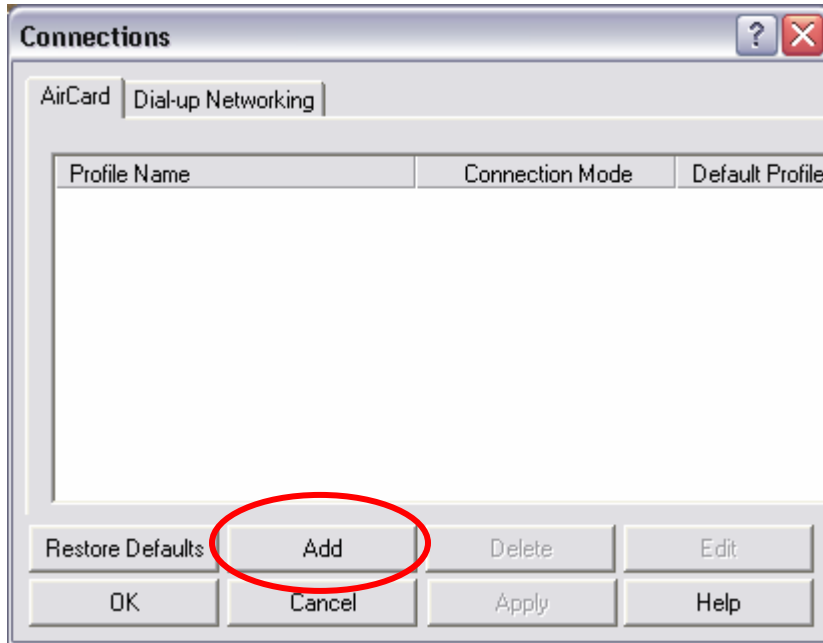
1. Please make sure you have registered your Telkomsel SIMCard by sending SMS with Keyword : Flash to 3636. If you haven't, please do so and wait until you receive reply SMS from 3636 as a sign that registration is successful.
2. Double click the AirCard 800 Series Watcher icon on your desktop or Click Start > All Programs > Sierra Wireless > Aircard 800 series > Aircard 800 Series Watcher (this step can only be done after you have successfully installed the Sierra Wireless Aircard driver)



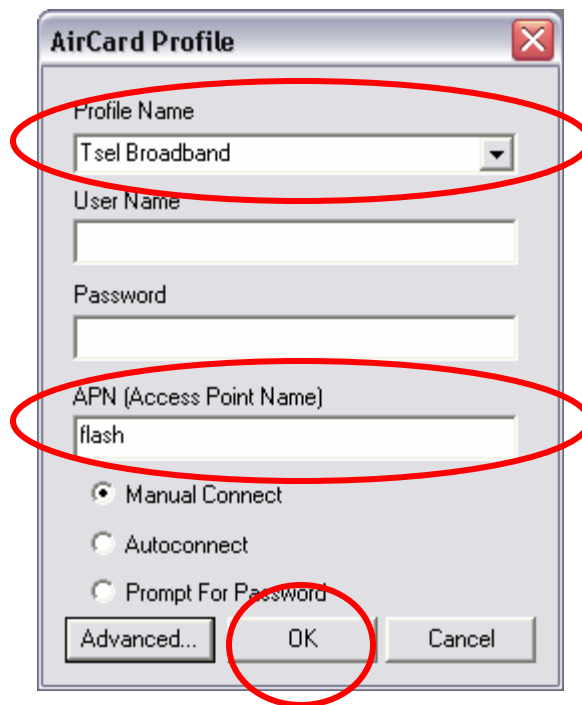
3. IF you are asked to enter your PIN, please enter you Telkomsel SIMCard PIN correctly (this is the same number that is asked whenever you turn on your handset)
4. Click Tools and pick Connections



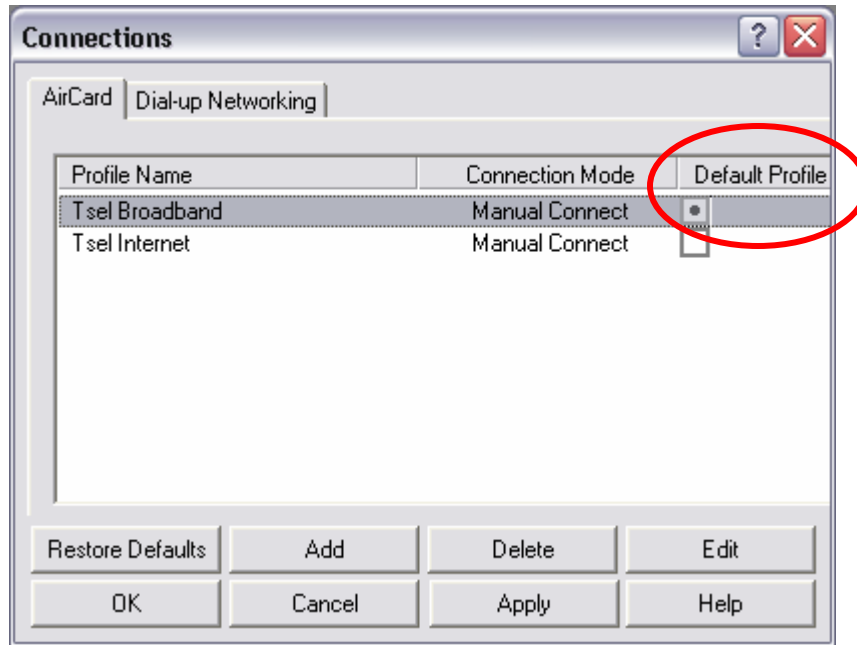
5. Click Add



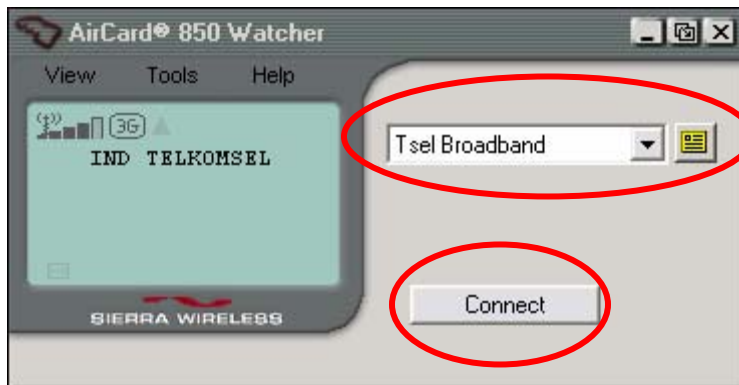
6. Please fill in the box according to the below picture and Click OK afterwards



7. In case you have other profile set, please move the default profile to Tsel Broadband Profile name



8. Please make sure that you are using Tsel Broadband Profile Name everytime you want to use TELKOMSELFash. After that, Click Connect



9. If you follow the step 1 to 7 correctly, you will be able to successfully connect to Telkomsel network with TELKOMSELFash settings. Successful connection will be marked with dialog box as shown below.

