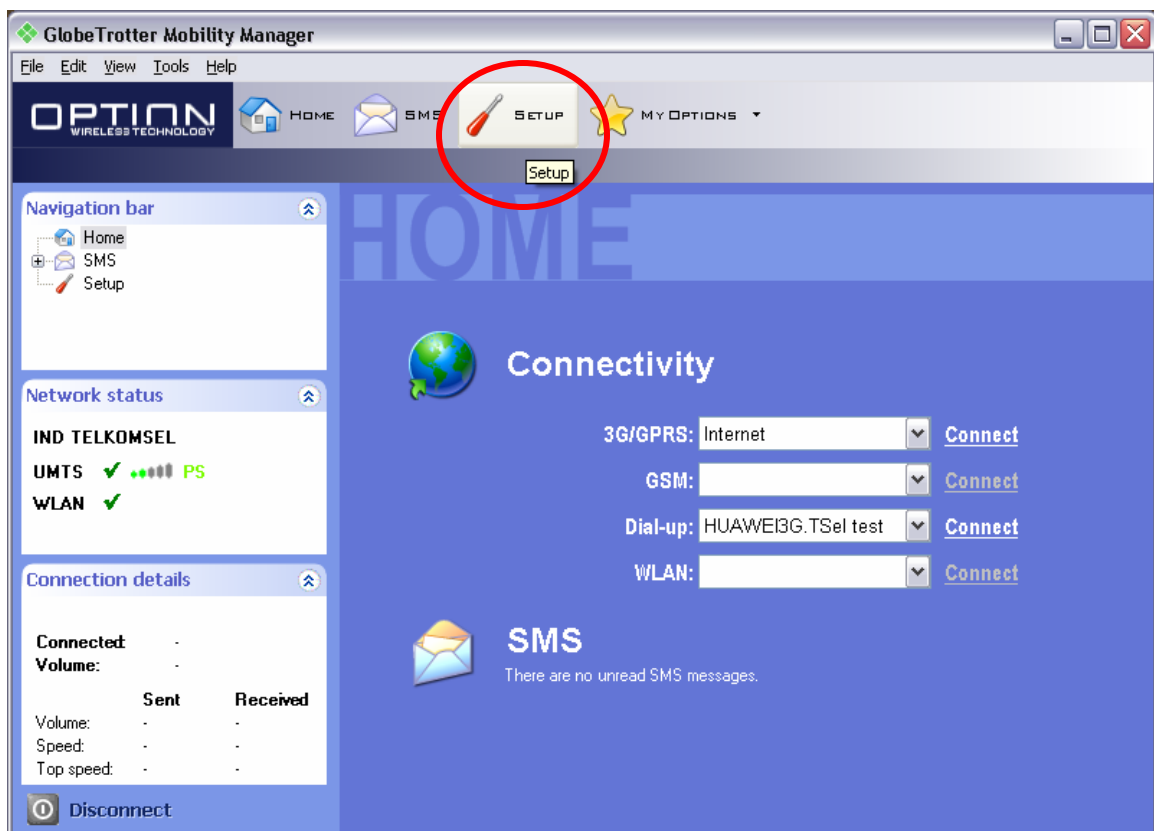
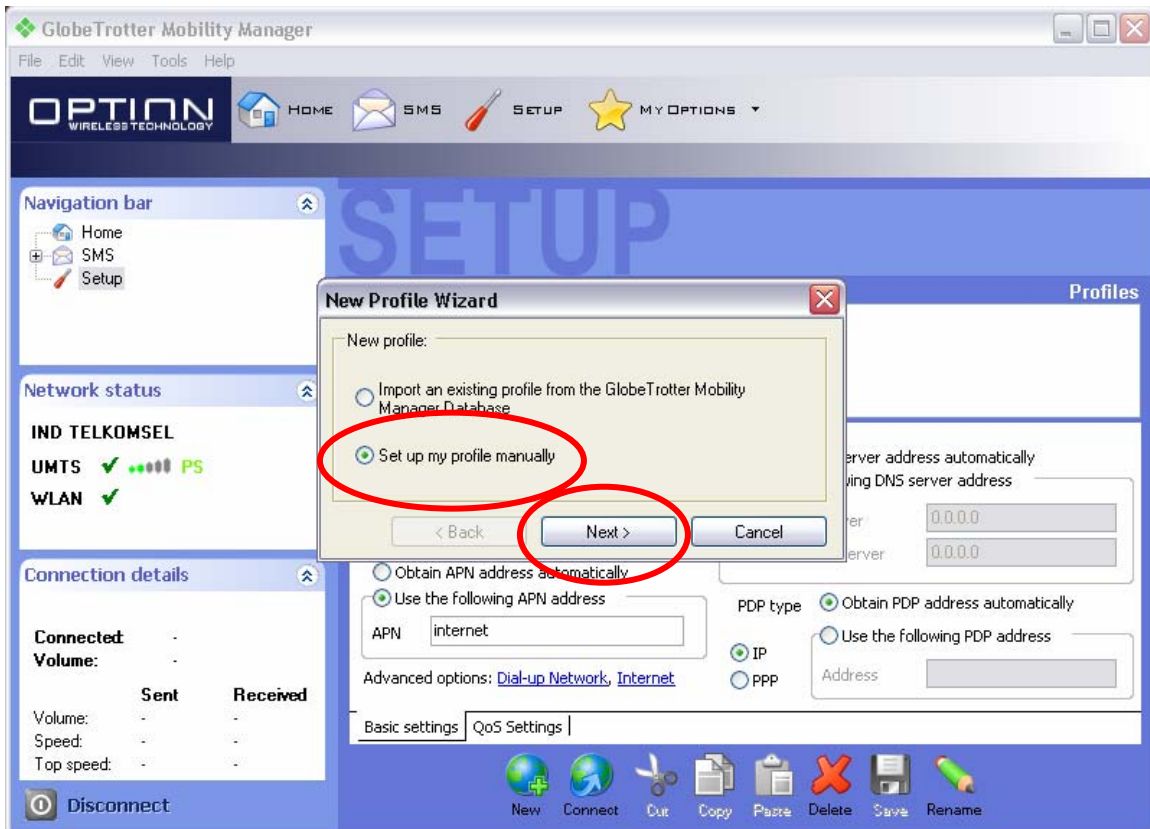


1. Please make sure you have registered your Telkomsel SIMCard by sending SMS with Keyword : Flash to 3636. If you haven't, please do so and wait until you receive reply SMS from 3636 as a sign that registration is successful.
2. Double click the Globetrotter Mobility Manager icon on your desktop OR Click Start > All Programs > Globetrotter Mobility Manager > Globetrotter Mobility Manager (this step can only be done after you have successfully installed the Option Datacard driver)
3. IF you are asked to enter your PIN, please enter you Telkomsel SIMCard PIN correctly (this is the same number that is asked whenever you turn on your handset)
4. Click Setup



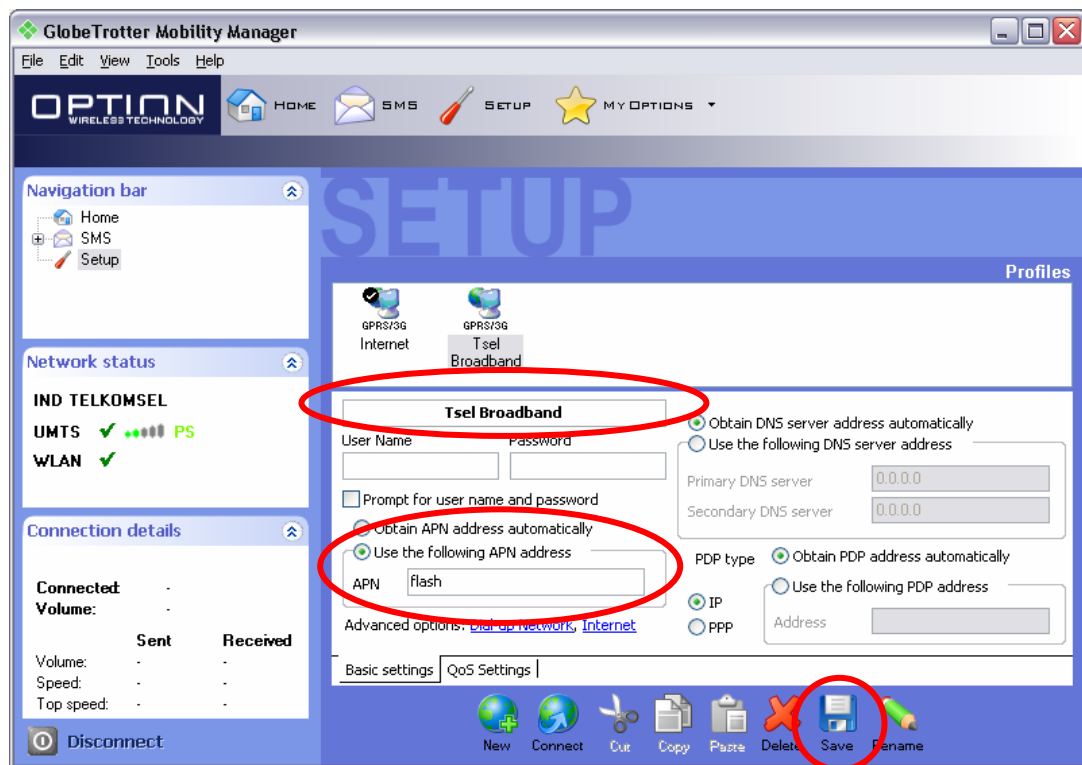
5. Click Set up my profile manually, then Click Next



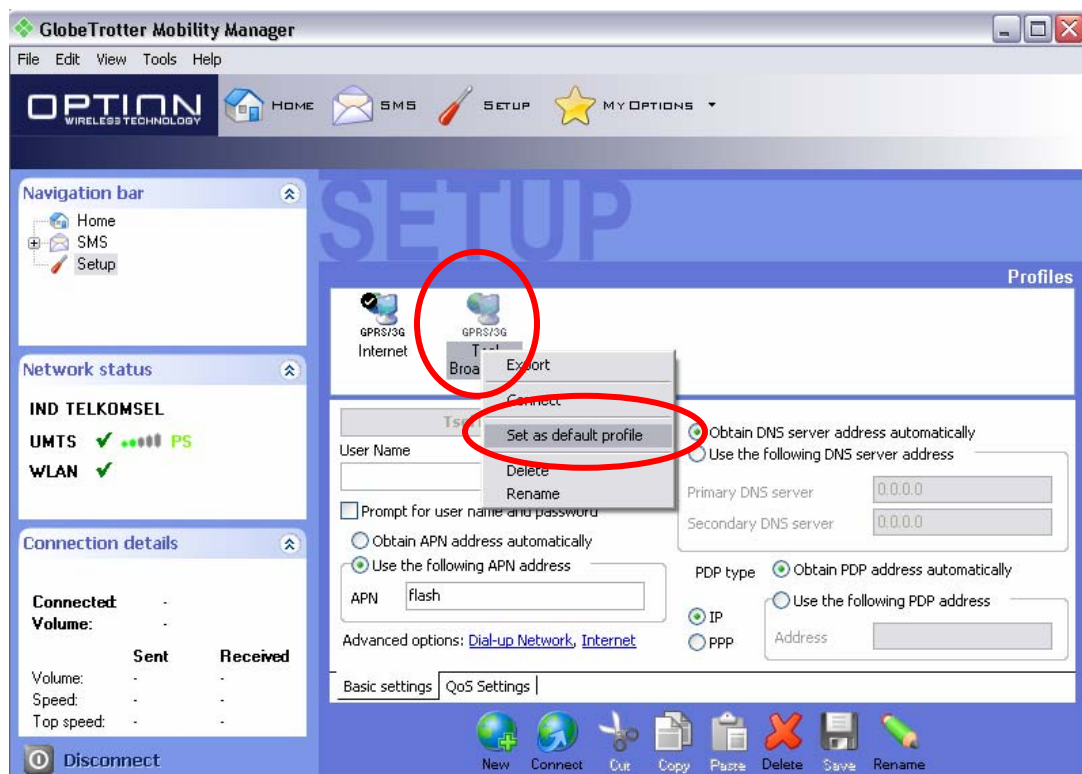
6. Click 3G/GPRS, then click next



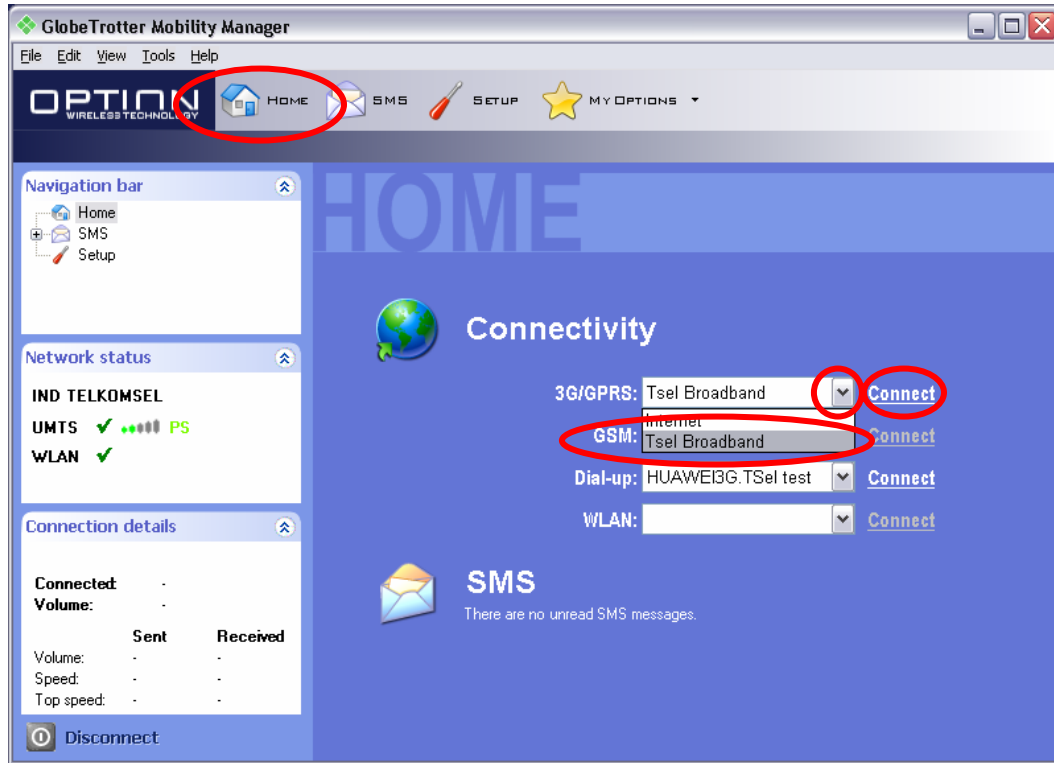
7. Please fill in the boxes according to the picture below. Please make sure you don't mistype it. Click Save afterwards



8. Right click on the Tsel Broadband icon and choose Set as default profile



9. Click Home. On the 3G/GPRS box please click the drop down menu (arrow) and pick Tsel Broadband. After that Click Connect. PLEASE REMEMBER to always use Tsel Broadband profile BEFORE click Connect.



10. If you follow the step 1 to 9 correctly, you will be able to successfully connect to Telkomsel network with TELKOMSELFash setting. Successful connection will be marked with dialog box as shown below.

